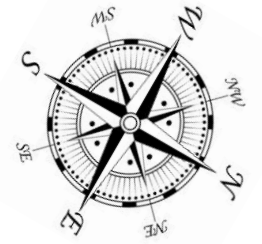


Evacuation Diagram

Interpretive Centre Busselton Jetty, Busselton



**YOU ARE
HERE**

EMERGENCY INFORMATION



In case of emergency contact:

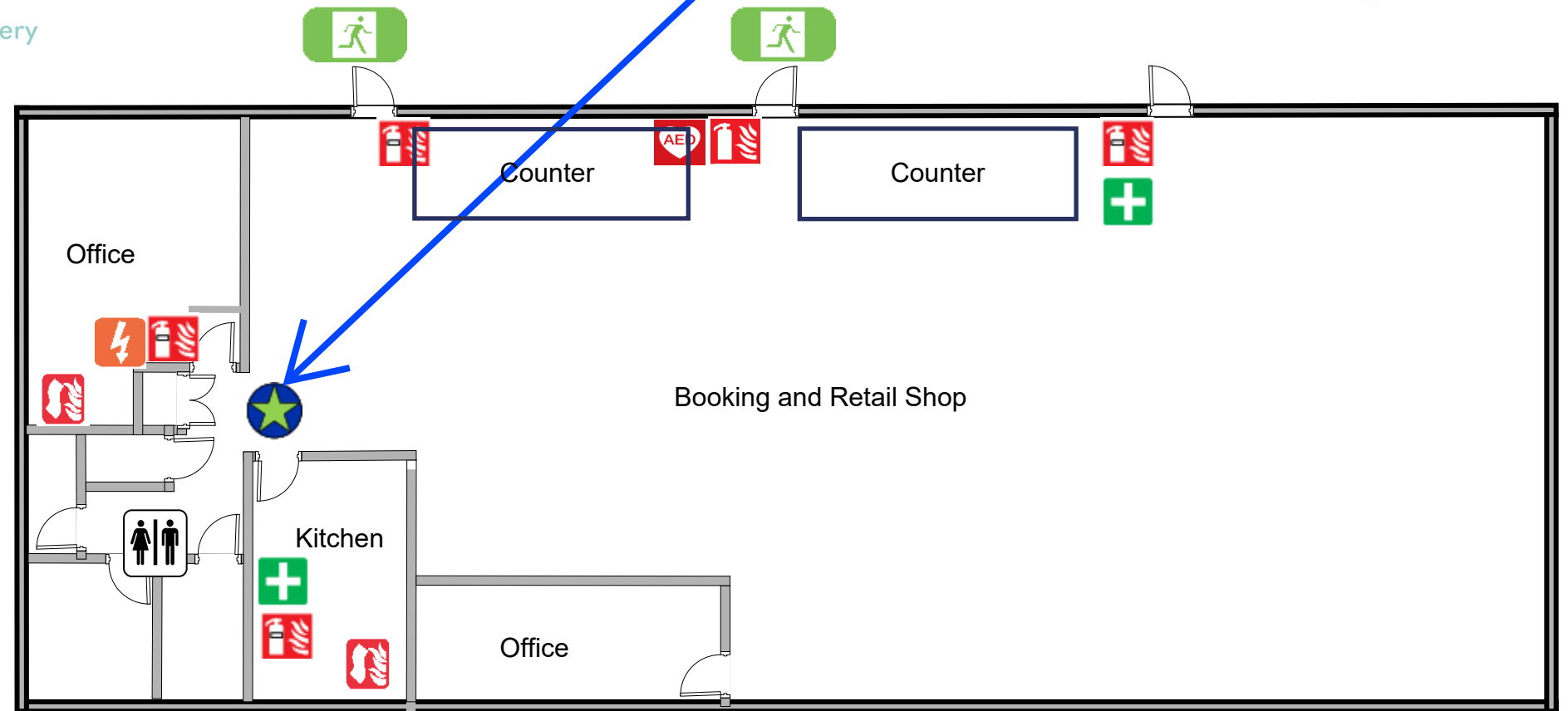
- **Police, Fire or Ambulance (life threatening) 000**
- Police (non-urgent) 131 444
- SES 132 500

EMERGENCY PROCEDURES

When directed by your Warden or when alarm is sounded:

- Assist others, if safe to do so
- Evacuate the building via the nearest safe exit
- Proceed to the assembly area, or as directed by your Warden or Emergency Services
- Remain at the assembly area until directed by your Warden or Emergency Services

Do not re-enter the building until instructed by your Warden or the Emergency Services.



LEGEND



Date: 26 September 2023 Version: 3
Not to scale. Emergency Egress Only

Evacuation Diagram

Interpretive Centre Busselton Jetty, Busselton



EMERGENCY INFORMATION



In case of emergency contact:

- **Police, Fire or Ambulance**
(life threatening) **000**
- Police (non-urgent) 131 444
- SES 132 500

EMERGENCY PROCEDURES

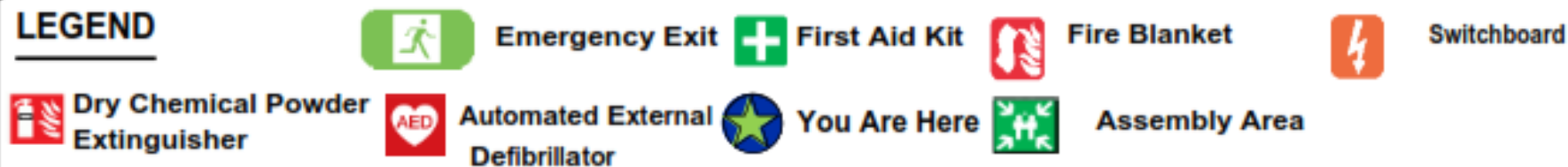
When directed by your Warden or when alarm is sounded:

- Assist others, if safe to do so
- Evacuate the building via the nearest safe exit
- Proceed to the assembly area, or as directed by your Warden or Emergency Services
- Remain at the assembly area until directed by your Warden or Emergency Services

Do not re-enter the building until instructed by your Warden or the Emergency Services.



LEGEND



Evacuation Diagram

Interpretive Centre
Busselton Jetty,
Busselton



EMERGENCY INFORMATION



In case of emergency contact:

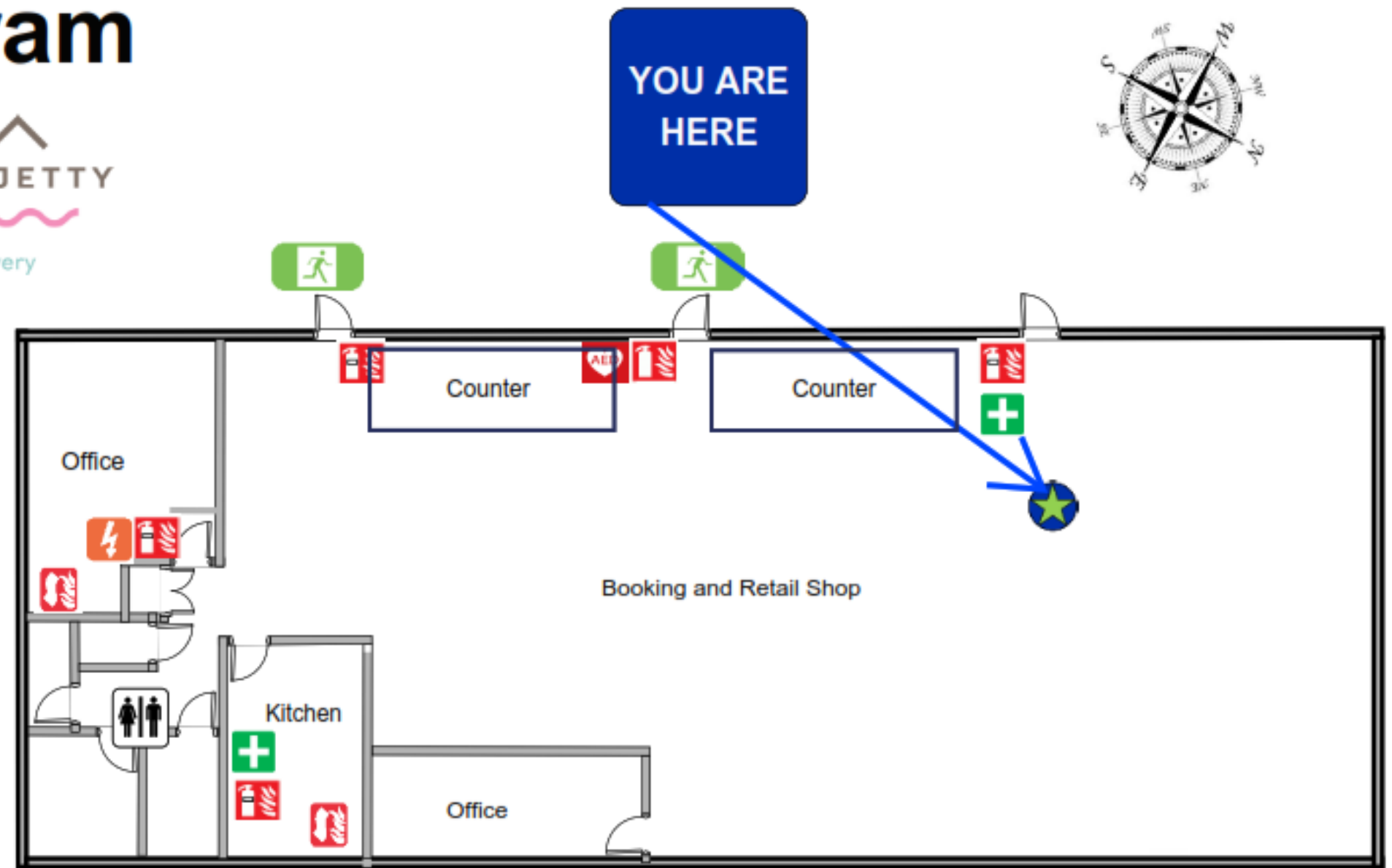
- **Police, Fire or Ambulance (life threatening)** 000
- **Police (non-urgent)** 131 444
- **SES** 132 500

EMERGENCY PROCEDURES

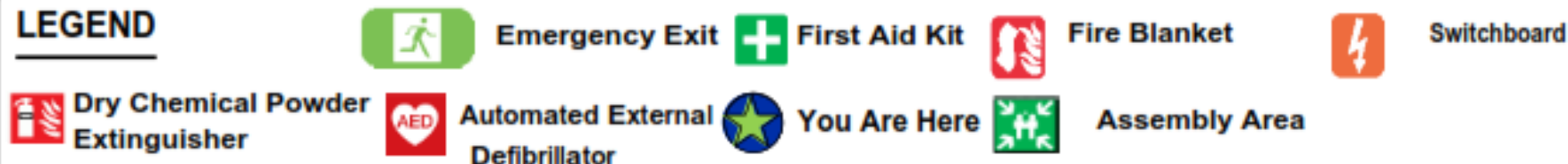
When directed by your Warden or when alarm is sounded:

- Assist others, if safe to do so
- Evacuate the building via the nearest safe exit
- Proceed to the assembly area, or as directed by your Warden or Emergency Services
- Remain at the assembly area until directed by your Warden or Emergency Services

Do not re-enter the building until instructed by your Warden or the Emergency Services.



LEGEND



Date: 26 September 2023 Version: 3
Not to scale. Emergency Egress Only